

CONTACT US 聯絡我們

☎ (852) 9238 0703
✉ rgt@rec-eng.com
🌐 www.rec-gt.com



Effectively Prevent Scaffold Collapses
有效防止棚架倒塌意外

Main Features 特點



24/7 Continuous Scaffolding Monitoring 全天候棚架監測

Real-time monitoring enabling competent persons (CPs) to **identify locations where developing risks**, facilitating targeted inspections, improving site safety management efficiency, and ensuring compliance with Labour Department requirements for regular scaffolding checks.

實時監測讓合資格人士 (CPs) 能夠**識別潛在風險的位置**，進行針對性檢查，提升工地安全管理效率，並確保符合勞工處對棚架定期檢查的要求。



Visualized Dashboard 可視化儀表

Provides user-friendly interface that converts sensor metrics (including **wall connector detachment & temperature**) into real-time displays, empowering site supervisors and safety officers to instantly assess overall scaffolding stability and make corresponding decisions.

提供易於使用的介面，將感測器數據 (包括**連牆器狀態和溫度**) 轉化為實時顯示，讓主管及安全主任能夠即時評估棚架整體穩定性，並作出相應決策。

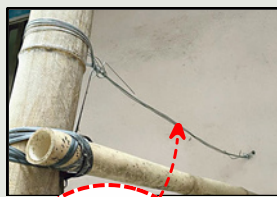


Proactive Protection Mechanisms 主動保護機制

Detects and alert the potential risks in real-time based on thresholds (wall tie detachment & high temperature) and issues alerts, enabling teams to intervene and **address issues before risks escalate**, to achieve preventive safety management.

根據警報值 (例如連牆器脫落和高溫)，實時偵測潛在風險並發出警報，讓團隊在**風險升級前介入處理**，實現預防性安全管理。

Detection Parameter 檢測參數



Wall Tie / Tie Status
連牆器狀態 / 拉搥狀態



Tilt Angle
結構傾斜度



Temperature
溫度



Vibration / Acceleration
振動 / 加速度

Operation Principle 運作原理



Specifications 規格

(Model 型號: 88S34G15)

IoT Protocol IoT 協議	4G
Dimension (L x H x D) 尺寸 (長 x 高 x 闊)	155 x 135 x 85 (mm)
Battery Life 電池壽命	Up to 2-3 Years 長達2-3年
IP Rating IP 等級	IP65

Data Output 數據輸出:-

- Detachment Detection Wire Status
連牆器感應線狀態
- Putlog Disconnect Alarm 拉搥斷開警報
- High Temperature Alarm 高溫警報
- Low Battery Alarm 低電量警報